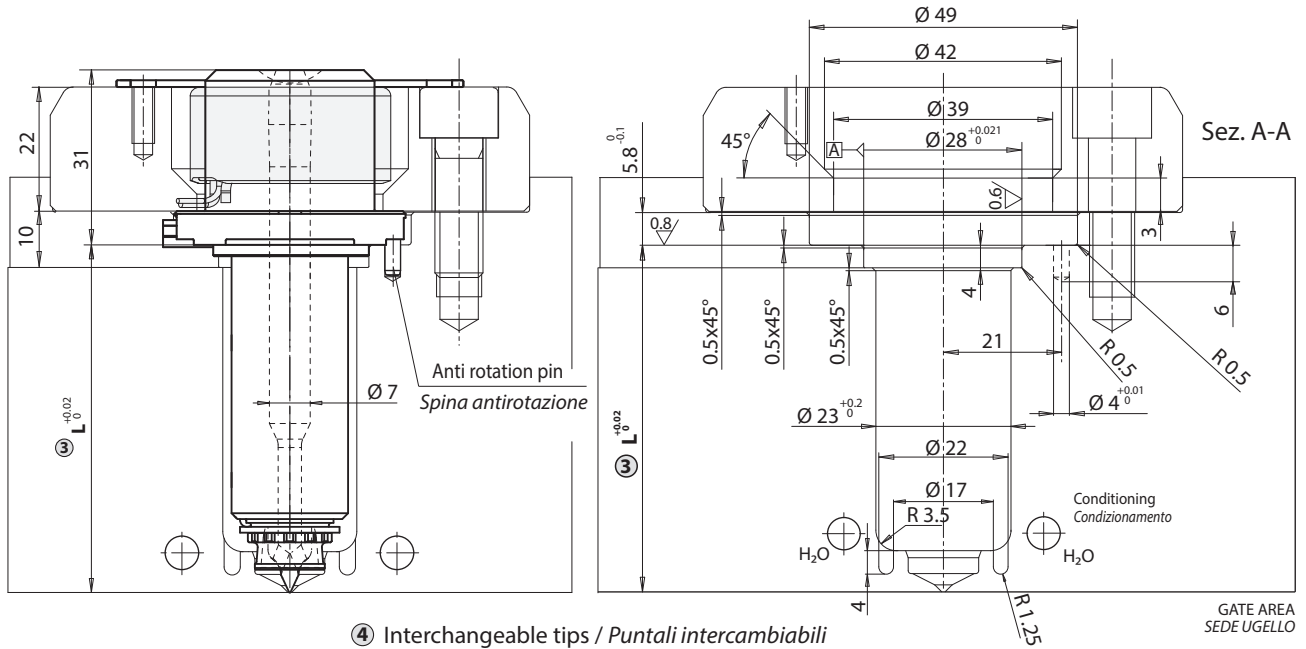
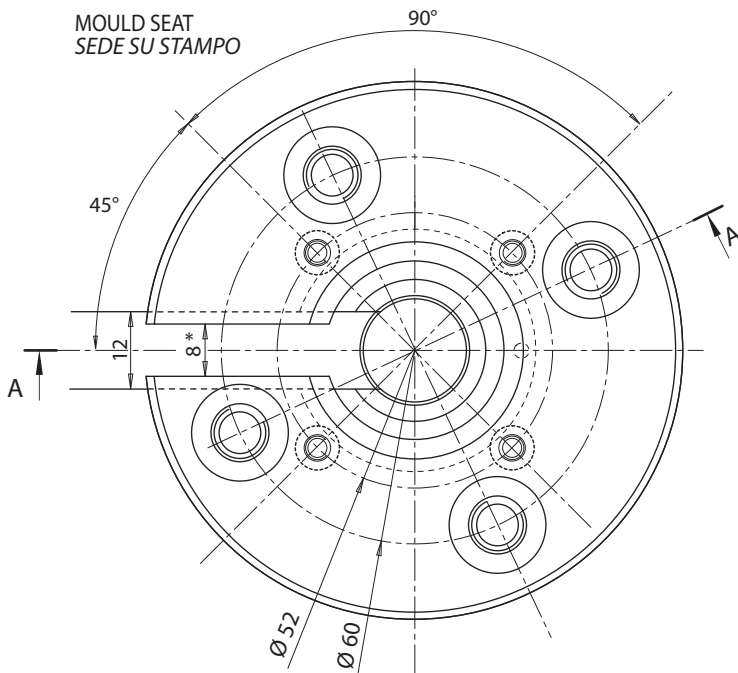
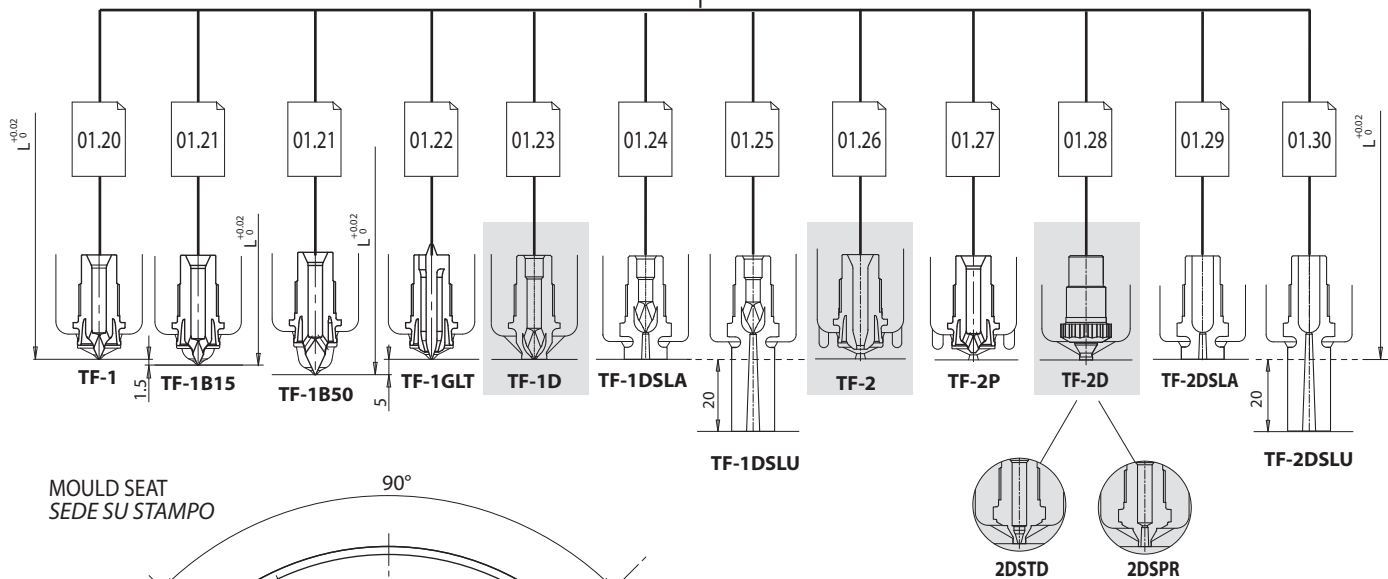




**CONFIGURABLE SINGLE NOZZLE**  
Create the configuration on [www.thermoplay.com](http://www.thermoplay.com)



④ Interchangeable tips / Puntali intercambiabili



Ordering code example / Esempio d'ordine ugello:

① ② ③ ④ ⑤ ⑦  
**T F 6 2 3 0 8 6 - 2 / R 0 9 5 - J G**

- ① Nozzle type / Tipo ugello (TF6)
- ② 23 Diameter nozzle / Diametro ugello (Ø23)
- ③ 086 Nozzle length / Lunghezza ugello (L=86)
- ④ 2 Tip type / Tipo puntale (2)
- ⑤ R095 Radius / Raggio testa (R 9.5)
- ⑦ JG Tc type / Tipo termocoppia (grounded / a massa)

In the highlighted types are not available on stock. Delivery times are to be agreed. All applications subjected to Thermoplay A.E. review  
 Le tipologie evidenziate non sono a magazzino. I tempi di consegna sono da concordare. Tutte le applicazioni sono soggette a verifica in fase di offerta.



**CONFIGURABLE SINGLE NOZZLE**  
Create the configuration on [www.thermoplay.com](http://www.thermoplay.com)

**E16749**

Seal ring supplied with the single nozzles  
Anello di tenuta fornito con il monougello

N° 4 screws M 4x8 DIN 912  
N° 4 viti M 4x8 DIN 912

N° 4 screws M 8x25 DIN 912  
N° 4 viti M 8x25 DIN 912

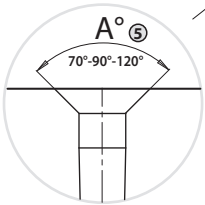
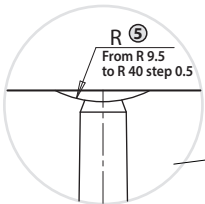
Sealing ring is at customer care  
Anello di centraggio a cura cliente

**E17537**

Heater and grounded thermocouple group (only thermocouple E08604)  
Gruppo resistenza e termocoppia a massa (solo termocoppia E08604)

**E18340**

Heater and insulated thermocouple (solo termocoppia E18338)  
Resistenza e termocoppia isolata (only thermocouple E18338)



**E18744**

Stop thermocouple ring  
Anello ferma termocoppia

Nozzle body / Corpo ugello

L* ③	Heater / Resistenza		Thermocouple / Termocoppia	
	Code / Codice	Watt	JG	JU ⑦
46	<b>E20630</b>	200	E05302-TF23	E16027-TF23
56	<b>E20631</b>			
66	<b>E20632</b>			
76	<b>E20633</b>			
86	<b>E20634</b>			
96	<b>E20635</b>	250	E05504-TF23	E16029-TF23
106	<b>E20636</b>			
116	<b>E20637</b>			
126	<b>E20638</b>	270	E05917-TF23	E16030-TF23
136	<b>E20639</b>			
146	<b>E20640</b>			
156	<b>E20641</b>			
166	<b>E20642</b>	300	E05913-TF23	E16031-TF23
176	<b>E20643</b>			
186	<b>E20644</b>			
196	<b>E20645</b>	350	E05913-TF23	E16031-TF23
206	<b>E20646</b>			

\* 1B15+1.5 - 1B50+5

**CABLES / CAVI**

Head thermocouple  
Red TC+ / Blue TC-  
Termocoppia testa  
Rosso TC+ / Blu TC-

Head heater 230 V  
White / Red-White  
Resistenza testa 230 V  
Bianco / Rosso-Bianco

Nozzle body thermocouple  
Red TC+ / Blue TC-  
Termocoppia corpo ugello  
Rosso TC+ / Blu TC-

Nozzle body heater 230 V  
White / Red-White  
Resistenza corpo ugello 230 V  
Bianco / Rosso-Bianco

If not specified, the radius R=0 and grounded thermocouple are supplied  
Se non specificato fornito raggio testa R = 0 e termocoppie a massa



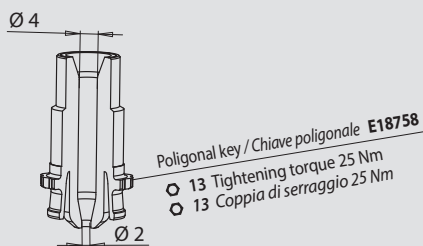
This type of tip not available on stock. Delivery times are to be agreed and all applications subjected to Thermoplay A.E. review  
 Questo tipo di puntale non è disponibile a magazzino. I tempi di consegna sono da concordare e tutte le applicazioni sono soggette a verifica in fase di offerta.

**TYPE TF-2:** The nozzle is suitable for moulding on sprues or directly in cavities, however leaving marked evidence of the injection point. The nozzle is not suitable for moulding materials that tend to drool but can be used with all other polymers, also with abrasive fillers.

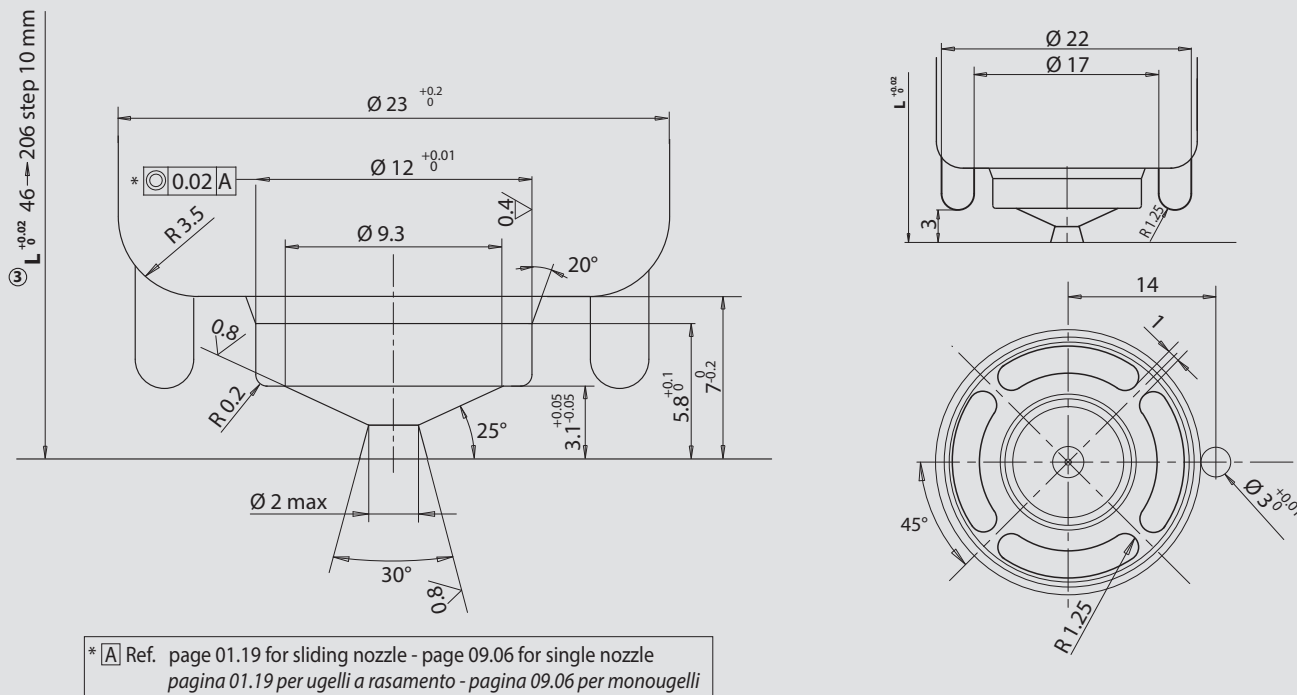
**TIPO TF-2:** L'ugello è idoneo allo stampaggio su materozza oppure direttamente in cavità lasciando un testimone marcato del punto di iniezione. L'ugello non è idoneo allo stampaggio di materiali che tendono a colare, ma può essere utilizzato con tutti gli altri materiali anche con cariche abrasive.

**TIP GROUP / GRUPPO PUNTALE**

Type / Tipo	Code / Codice
<b>TF23-2</b>	<b>E20584</b>



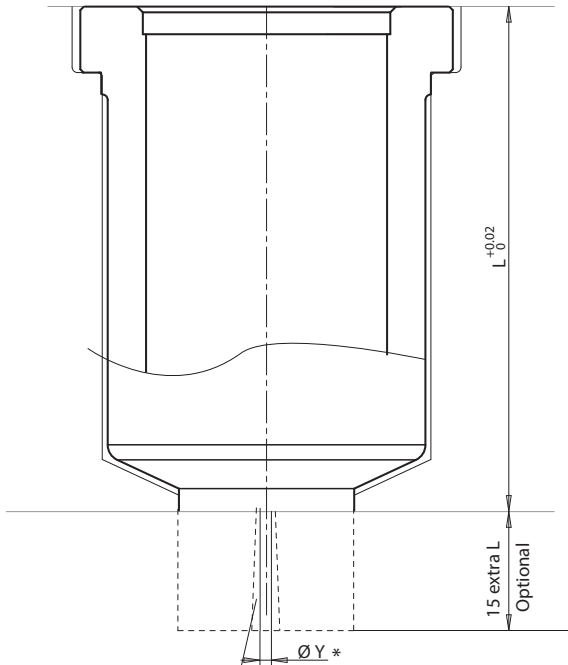
**GATE AREA / SEDE UGELLO**



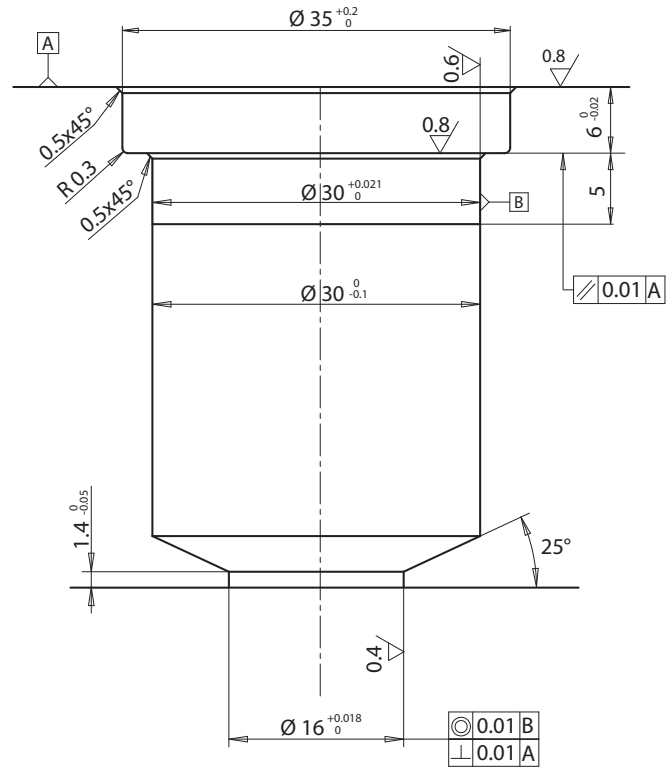
Standard and cooling bushings on pages 14.06-08 / Boccole portaugelli normali e condizionate pag. 14.06-08



BUSHING / BOCCOLA



BUSHING CUTOUT / SEDE BOCCOLA



Draft angle at customer care  
Sformatura a cura cliente

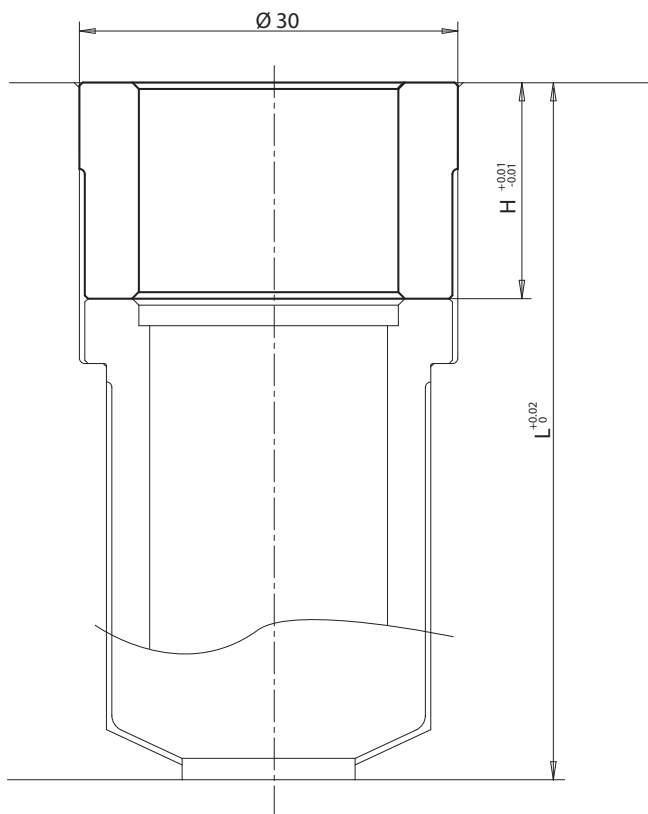
TF Ø 23	Nozzle Ø Ugello	TYPE TIPO	Ø Y *	L	TF Ø 23		TF6 Ø 23	
					sliding nozzles/ugelli a rasamento		single nozzles/monougelli	
					code/codice	code/codice extra L	code/codice	code/codice extra L
23	1 - 1GLT	0.6 >> 1.2	46	E09611/ØY	E09612/ØY	E16950/ØY	E16952/ØY	
			56	E09563/ØY	E09564/ØY	E16951/ØY	E16953/ØY	
		2 - 2P	1.0 >> 2.0	46	E09824/ØY	E09826/ØY	E16954/ØY	E16956/ØY
				56	E09825/ØY	E09827/ØY	E16955/ØY	E16957/ØY
		3 cylindrical 3 cilindrico	0.8 >> 2	46	E09841/ØY	E09843/ØY	MOØ23 - pag. 11.20	
				56	E09842/ØY	E09844/ØY		
	3conical 3conico	0.8 >> 1.3	46	E09922/ØY	E09924/ØY			
			56	E09923/ØY	E09925/ØY			

TD Ø 22	Nozzle Ø Ugello	TYPE TIPO	Ø Y *	L	TD Ø 22		TD6 Ø 22	
					sliding nozzles/ugelli a rasamento		single nozzles/monougelli	
					code/codice	code/codice extra L	code/codice	code/codice extra L
22	1 - 1GLT	0.6 >> 1.2	36	E17085/ØY	E17087/ØY	E17085/ØY	E17087/ØY	
			46	E17086/ØY	E17088/ØY	E17086/ØY	E17088/ØY	
		2	1.0 >> 2.0	36	E17772/ØY	E17774/ØY	E17772/ØY	E17774/ØY
				46	E17773/ØY	E17775/ØY	E17773/ØY	E17775/ØY
	3 cylindrical 3 cilindrico	0.8 >> 1.3	36	E17647/ØY	E17649/ØY	--	--	
			46	E17648/ØY	E17650/ØY	--	--	
	3conical 3conico	0.8 >> 1.6	36	E17659/ØY	E17661/ØY	--	--	
			46	E17660/ØY	E17662/ØY	--	--	

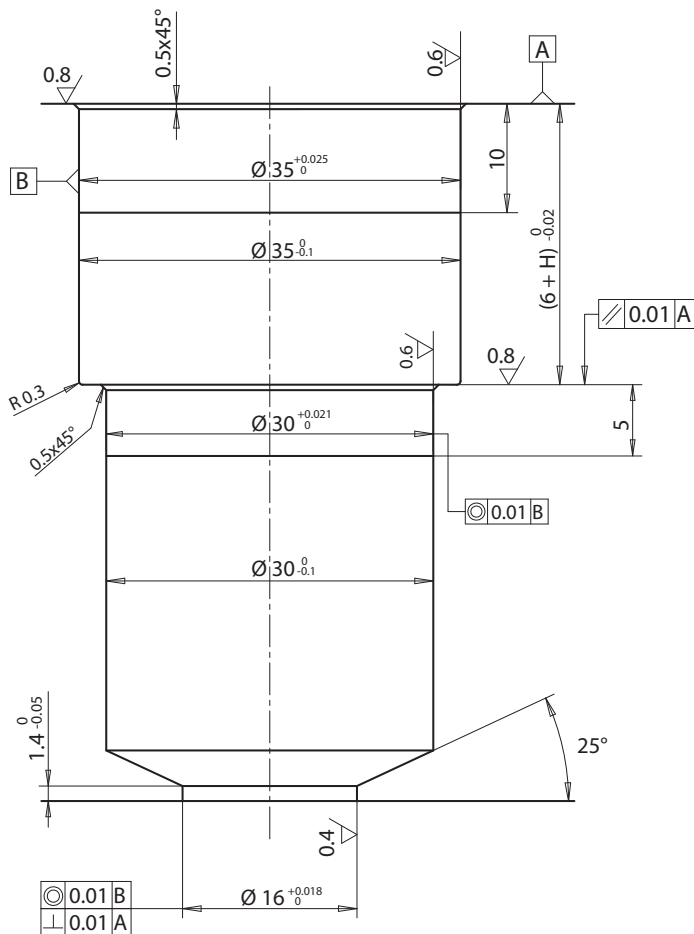
\* Thermoplay reserves the right to evaluate the feasibility of the gate diameter with respect to the extra length  
Thermoplay si riserva in fase d'ordine di valutare la fattibilità del diametro del foro rispetto all'altezza dell'extralunghezza



SPACER / DISTANZIALE



SPACER CUTOUT / SEDE DISTANZIALE



**TF Ø 23**

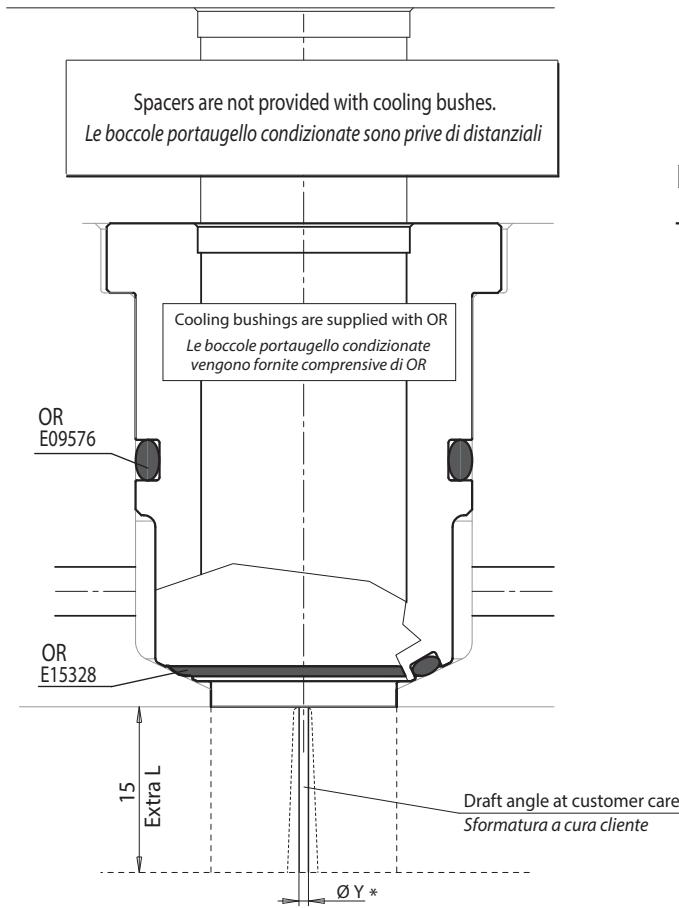
<b>TF Ø 23</b> sliding nozzles ugelli a rasamento	E09579	E09580	E09581	E09582	E09583	E09584	E09585	E09586	E09587	E09588	E09589	E09590	E09591	E09592	E09593	E09643
H	10	20	30	40	50	60	70	80	90	100	110	120	130	140	150	160
<b>TF6 Ø 23</b> single nozzles monougelli	E16966	E16967	E16968	E16969	E16970	E16971	E16972	E16973	E16974	E16975	E16976	E16977	E16978	E16979	E16980	E16981

**TD Ø 22**

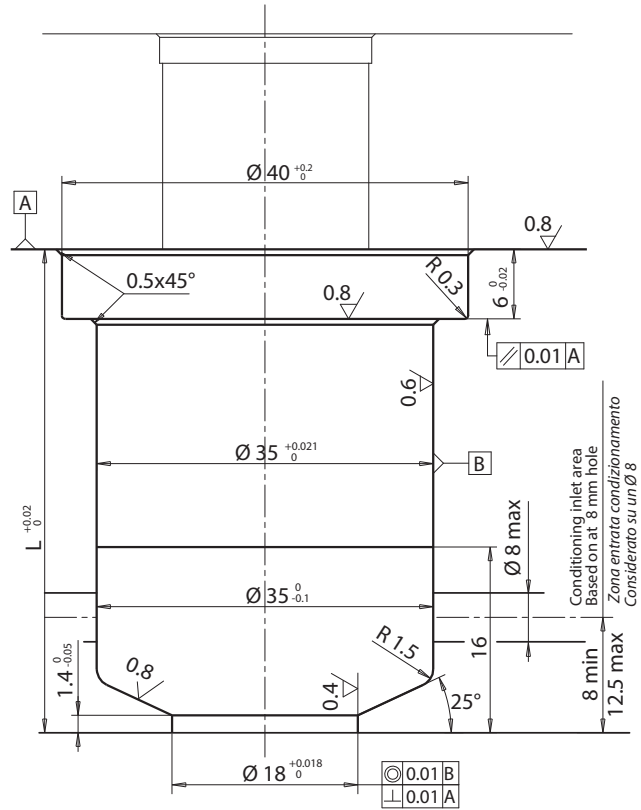
<b>TD Ø 22</b> sliding nozzles ugelli a rasamento	E17561	E06826	E17562	E06827	E07086	E17563	E17564	E17565	E17566	E17567
H	10	20	30	40	50	60	70	80	90	100
<b>TD6 Ø 22</b> single nozzles monougelli	E17561	E06826	E17562	E06827	E07086	E17563	E17564	E17565	E17566	E17567



BUSHING / BOCCOLA



BUSHING CUTOUT / SEDE BOCCOLA

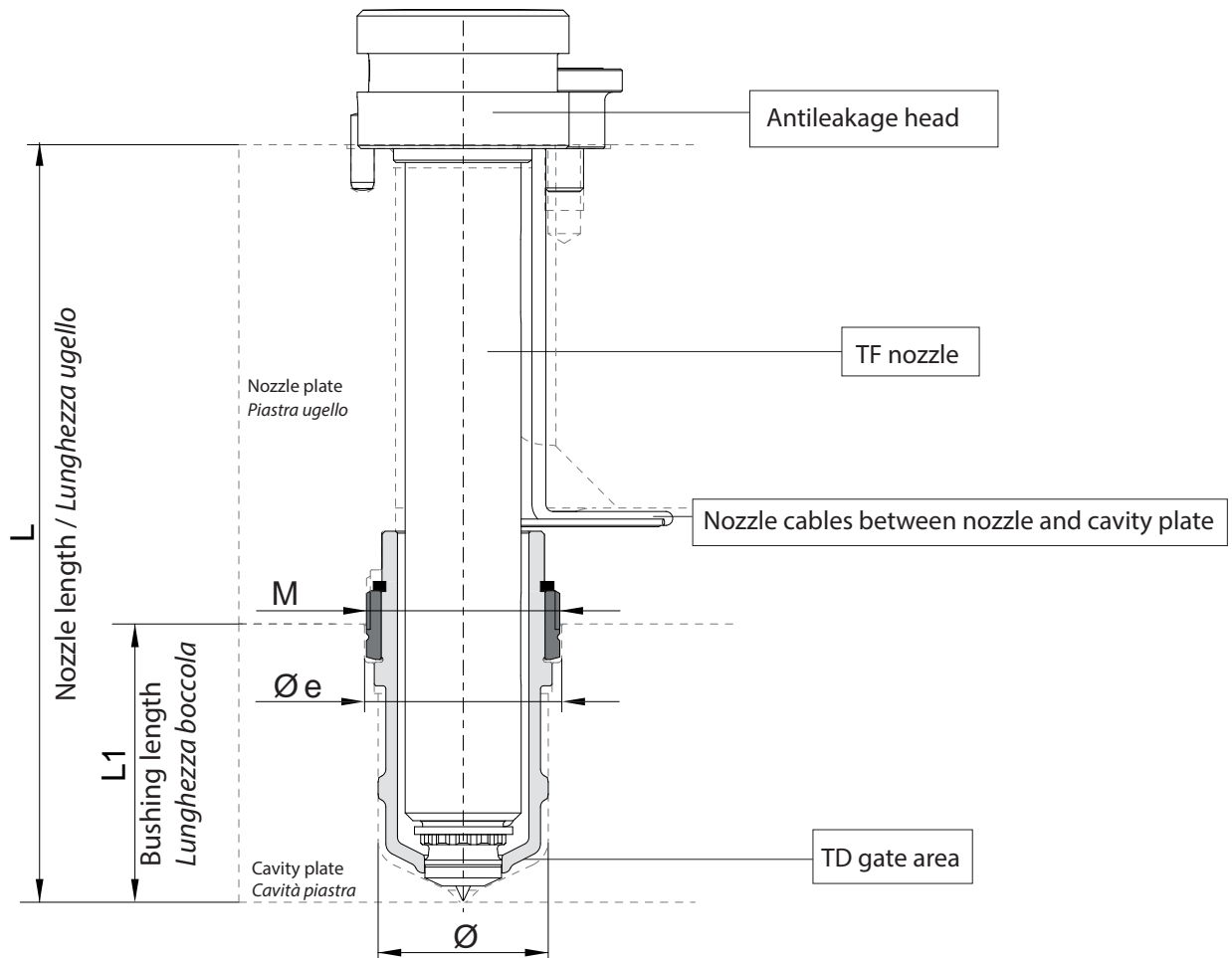


\* Thermoplay reserves the right to evaluate the feasibility of the gate diameter with respect to the extra length  
*Thermoplay si riserva in fase d'ordine di valutare la fattibilità del diametro del foro rispetto all'altezza dell'extralunghezza*

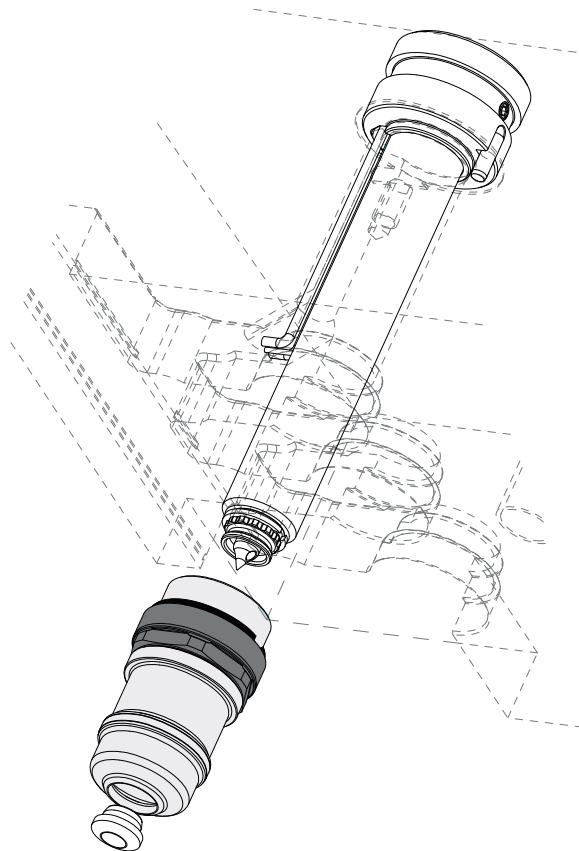
	Nozzle Ø Ø Ugello	TYPE TIPO	Ø Y *	L	TF Ø 23 sliding nozzles/ugelli a rasamento		TF6 Ø 23 single nozzles/monougelli			
					code/codice	code/codice extra L	code/codice	code/codice extra L		
					TF Ø 23	23	1 - 1GLT	0.6 >> 1.2	46	E09613/ØY
56	E09572/ØY	E09573/ØY	E16983/ØY	E16985/ØY						
2 - 2P	1.0 >> 2.0	46	E09828/ØY	E09830/ØY			E16986/ØY	E16988/ØY		
		56	E09829/ØY	E09831/ØY			E16987/ØY	E16989/ØY		
3 cylindrical 3 cilindrico	0.8 >> 1.8	46	E09845/ØY	E09847/ØY			MOØ23 - pag. 11.21			
		56	E09846/ØY	E09848/ØY						
3conical 3conico	0.8 >> 2	46	E09930/ØY	E09932/ØY						
		56	E09931/ØY	E09933/ØY						
1D-3D	--	46	E09702	--					E16998	--
		56	E09703	--					E16999	--
2D	--	46	E09834	--			E17000	--		
		56	E09835	--			E17001	--		

	Nozzle Ø Ø Ugello	TYPE TIPO	Ø Y *	L	TD Ø 22 sliding nozzles/ugelli a rasamento		TD6 Ø 22 single nozzles/monougelli	
					code/codice	code/codice extra L	code/codice	code/codice extra L
					TD Ø 22	22	1 - 1GLT	0.6 >> 1.2
46	E17576/ØY	E17578/ØY	E17576/ØY	E17578/ØY				
2	1.0 >> 2.0	36	E17788/ØY	E17790/ØY			E17788/ØY	E17790/ØY
		46	E17789/ØY	E17791/ØY			E17789/ØY	E17791/ØY
3 cylindrical 3 cilindrico	0.8 >> 1.3	36	E17623/ØY	E17625/ØY		--	--	
		46	E17624/ØY	E17626/ØY		--	--	
3conical 3conico	0.8 >> 1.6	36	E17635/ØY	E17637/ØY		--	--	
		46	E17636/ØY	E17638/ØY		--	--	

Spacers are not provided with cooling bushes. / *Le boccole portaugello condizionate sono prive di distanziali.*



For nozzle Per ugello	Ø	M	Ø e
<b>TF Ø 14</b>	18	M22	24
<b>TF Ø 17</b>	22	M25	25.5
<b>TF Ø 23</b>	30	M35	35.5



Not available on stock. Delivery times are to be agreed. *Non disponibile a magazzino. I tempi di consegna sono da concordare.*