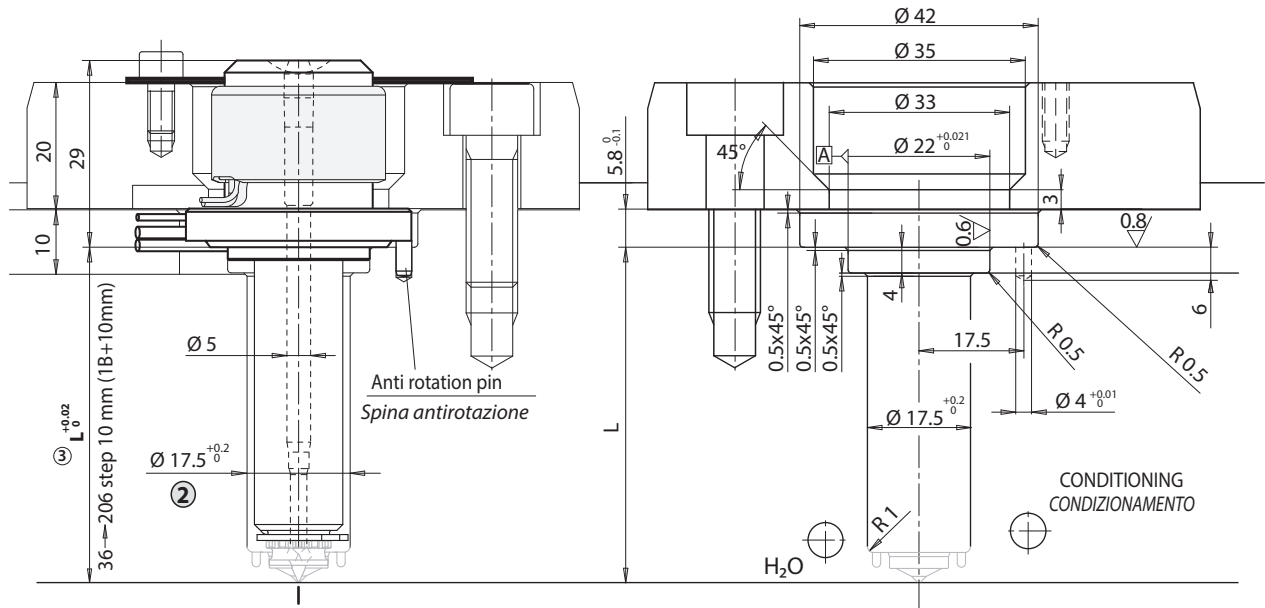
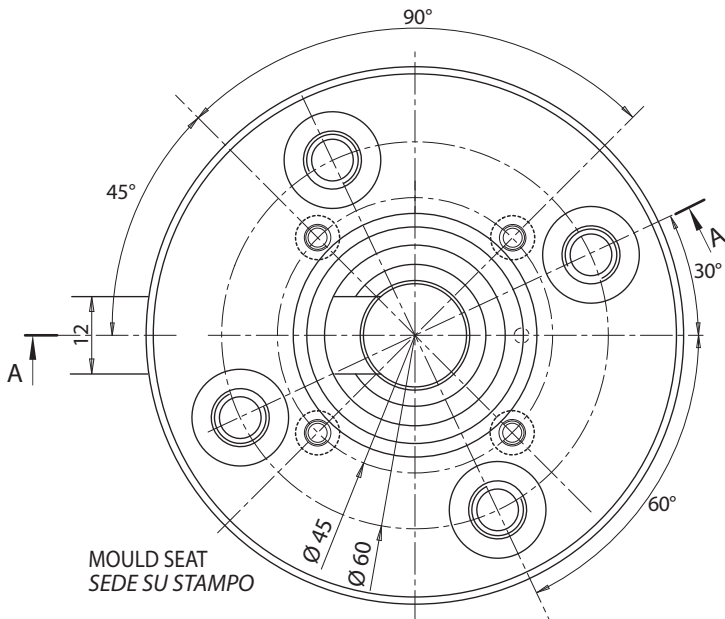
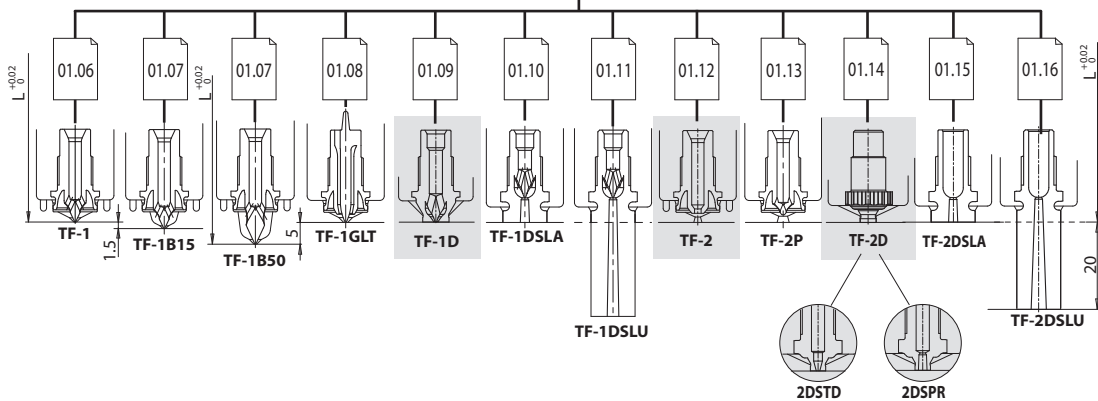




CONFIGURABLE SINGLE NOZZLE
Create the configuration on www.thermoplay.com



Interchangeable tips / Puntali intercambiabili ④



Ordering code example / Esempio d'ordine ugello:

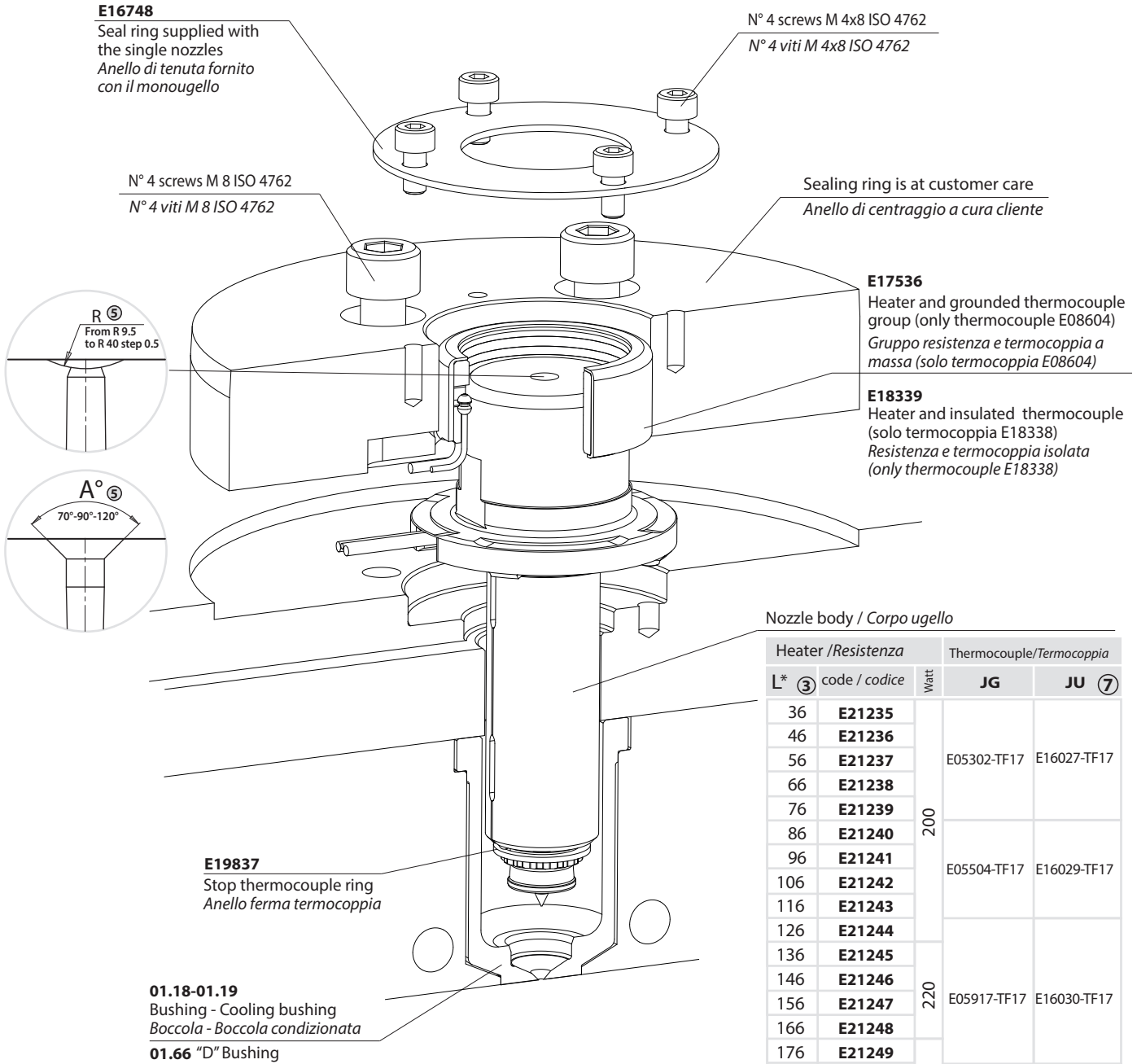
① ② ③ ④ ⑤ ⑦
T F 6 1 7 0 8 6 - 1 / R 0 9 5 - J G

- ① Nozzle type / Tipo ugello (TF6)
- ② 17 Diameter nozzle / Diametro ugello (Ø17)
- ③ 086 Nozzle length / Lunghezza ugello (L=86)
- ④ 1 Tip type / Tipo puntale (1)
- ⑤ R095 Radius / Raggio testa (R 9.5)
- ⑦ JG Tc type / Tipo termocoppia (grounded / a massa)

The highlighted types are not available on stock. Delivery times are to be agreed. All applications subjected to Thermoplay A.E. review
 Le tipologie evidenziate non sono disponibili a magazzino. I tempi di consegna sono da concordare. Tutte le applicazioni sono soggette a verifica in fase di offerta.



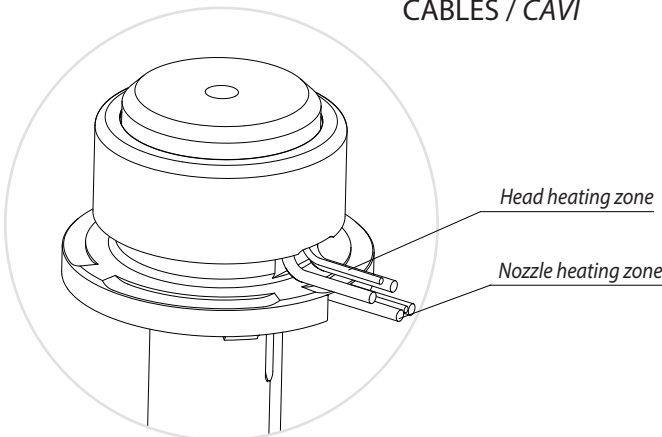
CONFIGURABLE SINGLE NOZZLE
Create the configuration on www.thermoplay.com



Heater / Resistenza		Thermocouple / Termocoppia	
L* ③	code / codice	Watt	JG JU ⑦
36	E21235	200	E05302-TF17 E16027-TF17
46	E21236		
56	E21237		
66	E21238		
76	E21239		
86	E21240		
96	E21241	220	E05504-TF17 E16029-TF17
106	E21242		
116	E21243		
126	E21244		
136	E21245	235	E05917-TF17 E16030-TF17
146	E21246		
156	E21247		
166	E21248		
176	E21249	E05913-TF17 E16031-TF17	
186	E21250		
196	E21251		
206	E21252		

* 1B15+1.5 - 1B50+5

CABLES / CAVI



HEATER / RESISTENZA	
White / Red-White Bianco / Rosso-Bianco	230 V
THERMOCOUPLE TERMOCOPPIA	
Red / Rosso	TC+
Blue / Blu	TC-

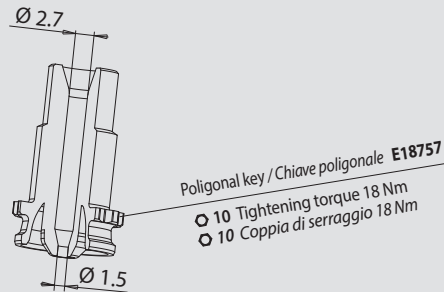
This type of tip not available on stock. Delivery times are to be agreed and all applications subjected to Thermoplay A.E. review
 Questo tipo di puntale non è disponibile a magazzino. I tempi di consegna sono da concordare e tutte le applicazioni sono soggette a verifica in fase di offerta.

TYPE TF-2: The nozzle is suitable for moulding on sprues or directly in cavities, however leaving marked evidence of the injection point. The nozzle is not suitable for moulding materials that tend to drool but can be used with all other polymers, also with abrasive fillers.

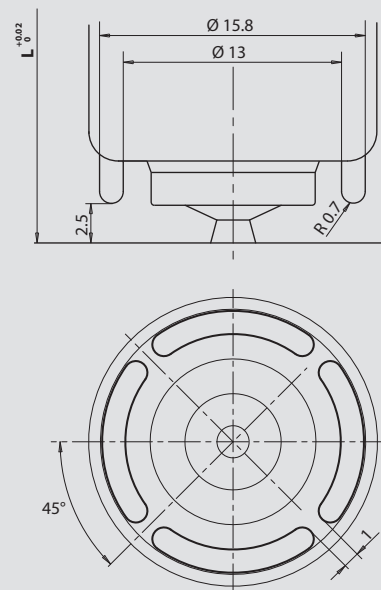
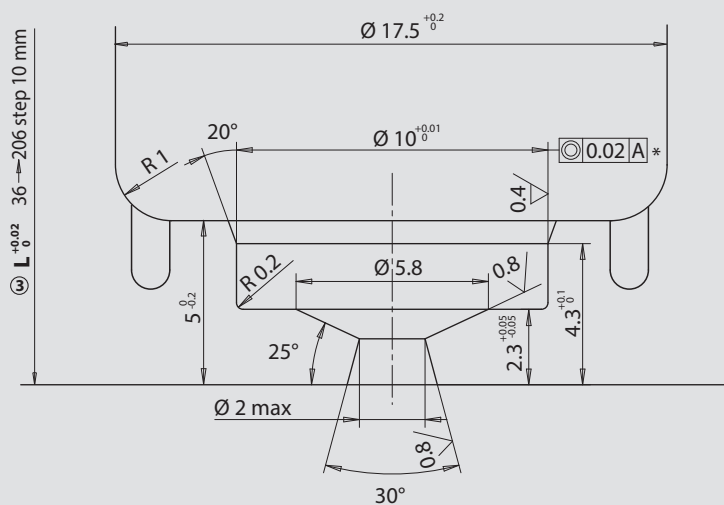
TIPO TF-2: L'ugello è idoneo allo stampaggio su materozza oppure direttamente in cavità lasciando un testimone marcato del punto di iniezione. L'ugello non è idoneo allo stampaggio di materiali che tendono a colare, ma può essere utilizzato con tutti gli altri materiali anche con cariche abrasive.

TIP GROUP / GRUPPO PUNTALE

⑤ Type / Tipo	Code / Codice
TF17-2	E20874



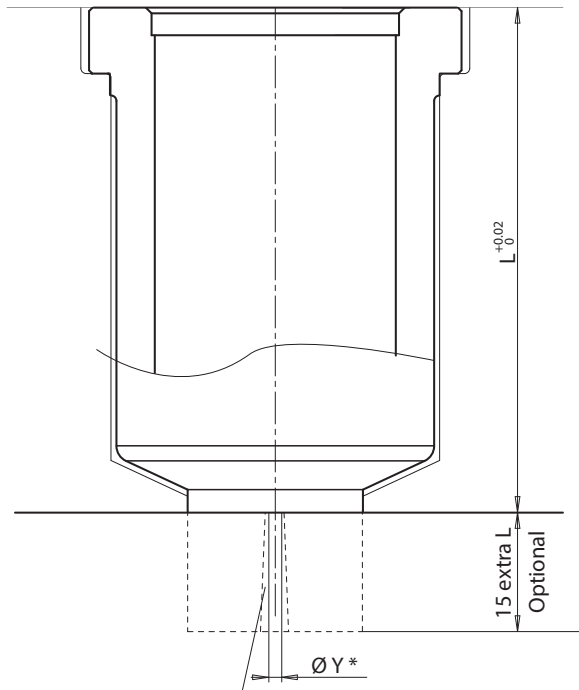
GATE AREA / SEDE UGELLO



* **A** Ref. page 01.05 for sliding nozzle - page 09.04 for single nozzle
A Rif. to pagina 01.05 per ugelli a rasamento - pagina 09.04 per monougelli

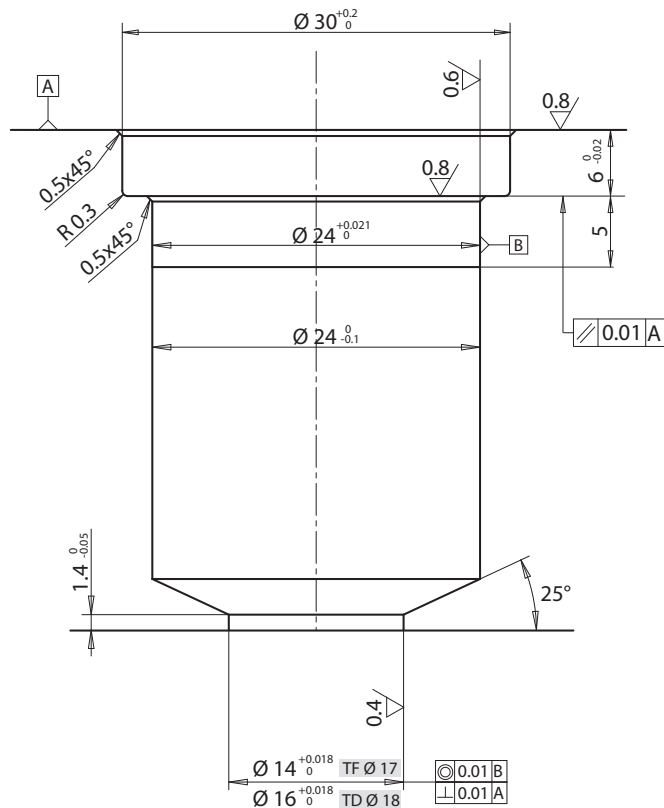


BUSHING / BOCCOLA



Draft angle at customer care
Sformatura a cura cliente

BUSHING CUTOUT / SEDE BOCCOLA



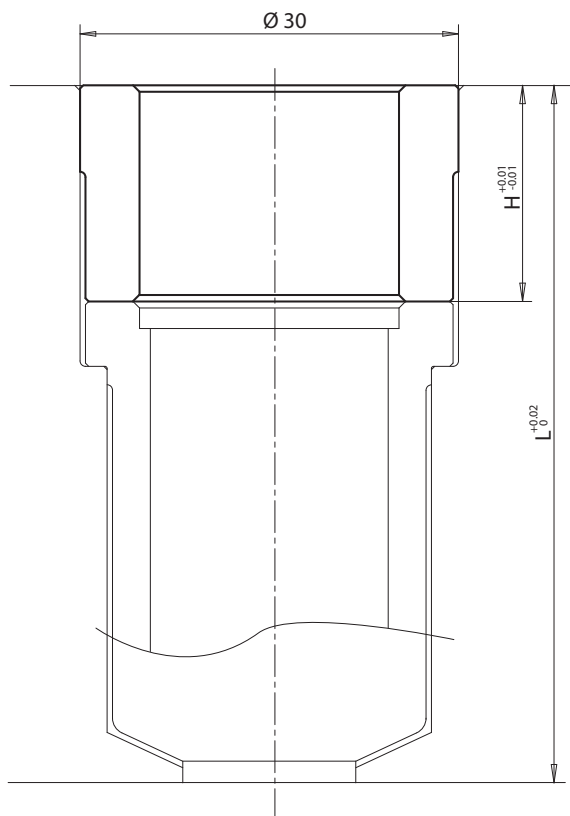
	Nozzle Ø Ø Ugello	TYPE TIPO	ØY*	L	TF Ø 17 sliding nozzles/ugelli a rasamento		TF6 Ø 17 single nozzles/monougelli	
					code/codice	code/codice extra L	code/codice	code/codice extra L
					TF Ø 17	17	1 - 1GLT	0.6 >> 1.2
46	E09506/ØY	E09508/ØY	E16876/ØY	E16878/ØY				
2 - 2P	1.0 >> 2.0	36	E09677/ØY	E09679/ØY			E16879/ØY	E16881/ØY
		46	E09678/ØY	E09680/ØY			E16880/ØY	E16882/ØY
3 cylindrical 3 cilindrico	0.8 >> 1.8	36	E09686/ØY	E09688/ØY			MOØ17 - pag. 11.10	
		46	E09687/ØY	E09689/ØY				
3conical 3conico	0.8 >> 1.3	36	E09910/ØY	E09912/ØY				
		46	E09911/ØY	E09913/ØY				

	Nozzle Ø Ø Ugello	TYPE TIPO	ØY*	L	TD Ø 18 sliding nozzles/ugelli a rasamento		TD6 Ø 18 single nozzles/monougelli	
					code/codice	code/codice extra L	code/codice	code/codice extra L
					TD Ø 18	18	1 - 1GLT	0.6 >> 1.2
46	E17029/ØY	E17031/ØY	E17029/ØY	E17031/ØY				
2	1.0 >> 1.8	36	E17768/ØY	E17770/ØY			E17768/ØY	E17770/ØY
		46	E17769/ØY	E17771/ØY			E17769/ØY	E17771/ØY
3 cylindrical 3 cilindrico	0.8 >> 1.1	36	E17935/ØY	E17937/ØY			--	--
		46	E17936/ØY	E17938/ØY			--	--
3conical 3conico	0.8 >> 1.2	36	E17939/ØY	E17941/ØY			--	--
		46	E17940/ØY	E17942/ØY			--	--

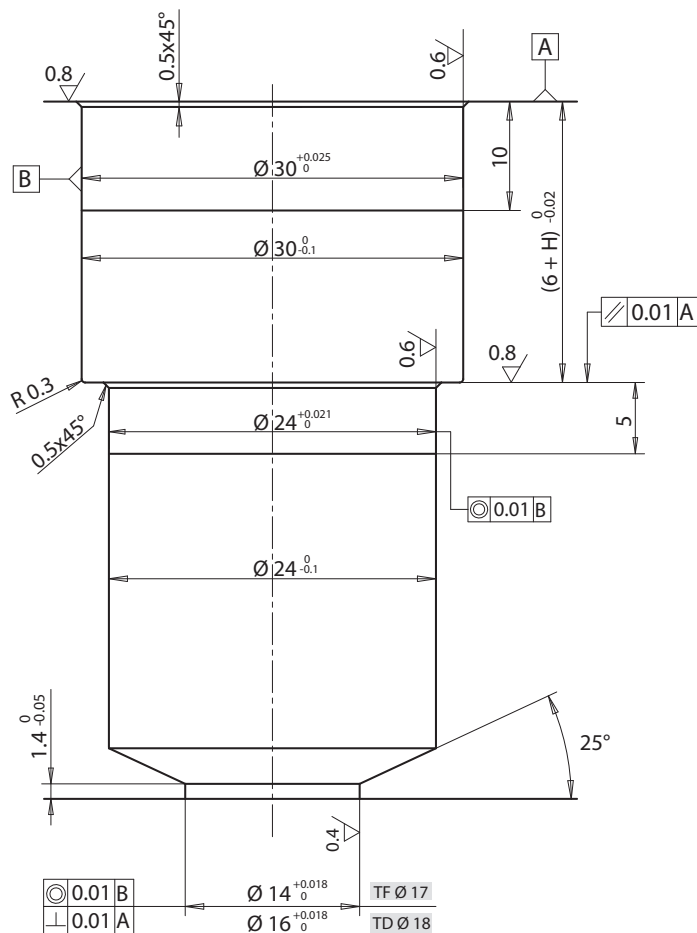
* Thermoplay reserves the right to evaluate the feasibility of the gate diameter with respect to the extra length
Thermoplay si riserva in fase d'ordine di valutare la fattibilità del diametro del foro rispetto all'altezza dell'extralunghezza



SPACER / DISTANZIALE



SPACER CUTOUT / SEDE DISTANZIALE



TF Ø 17

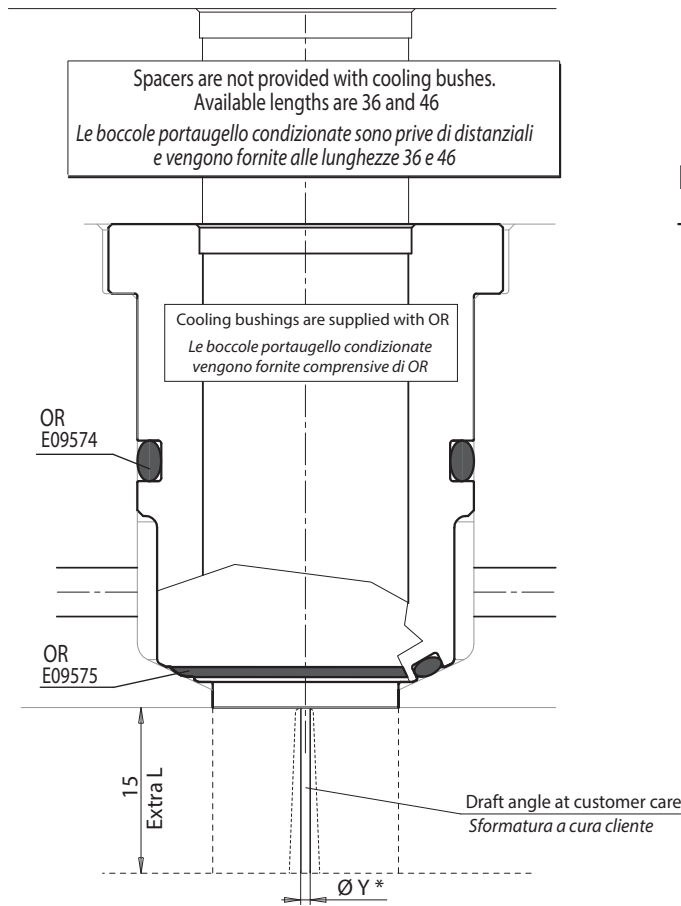
TF Ø 17 sliding nozzles ugelli a rasamento	E09518	E09519	E09520	E09521	E09522	E09523	E09524	E09525	E09526	E09527	E09528	E09529	E09530	E09531	E09532	E09533	E09642
H	10	20	30	40	50	60	70	80	90	100	110	120	130	140	150	160	170
TF6 Ø 17 single nozzles monougelli	E16891	E16892	E16893	E16894	E16895	E16896	E16897	E16898	E16899	E16900	E16901	E16902	E16903	E16904	E16905	E16906	E16907

TD Ø 18

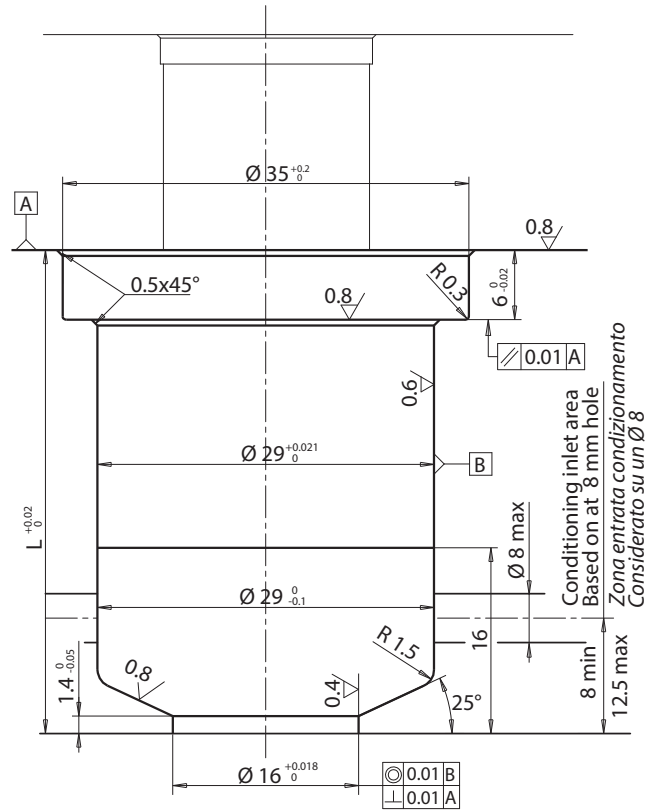
TD Ø 18 sliding nozzles ugelli a rasamento	E09518	E09519	E09520	E09521	E09522	E09523	E09524	E09525	E09526	E09527
H	10	20	30	40	50	60	70	80	90	100
TD6 Ø 18 single nozzles monougelli	E09518	E09519	E09520	E09521	E09522	E09523	E09524	E09525	E09526	E09527



BUSHING / BOCCOLA



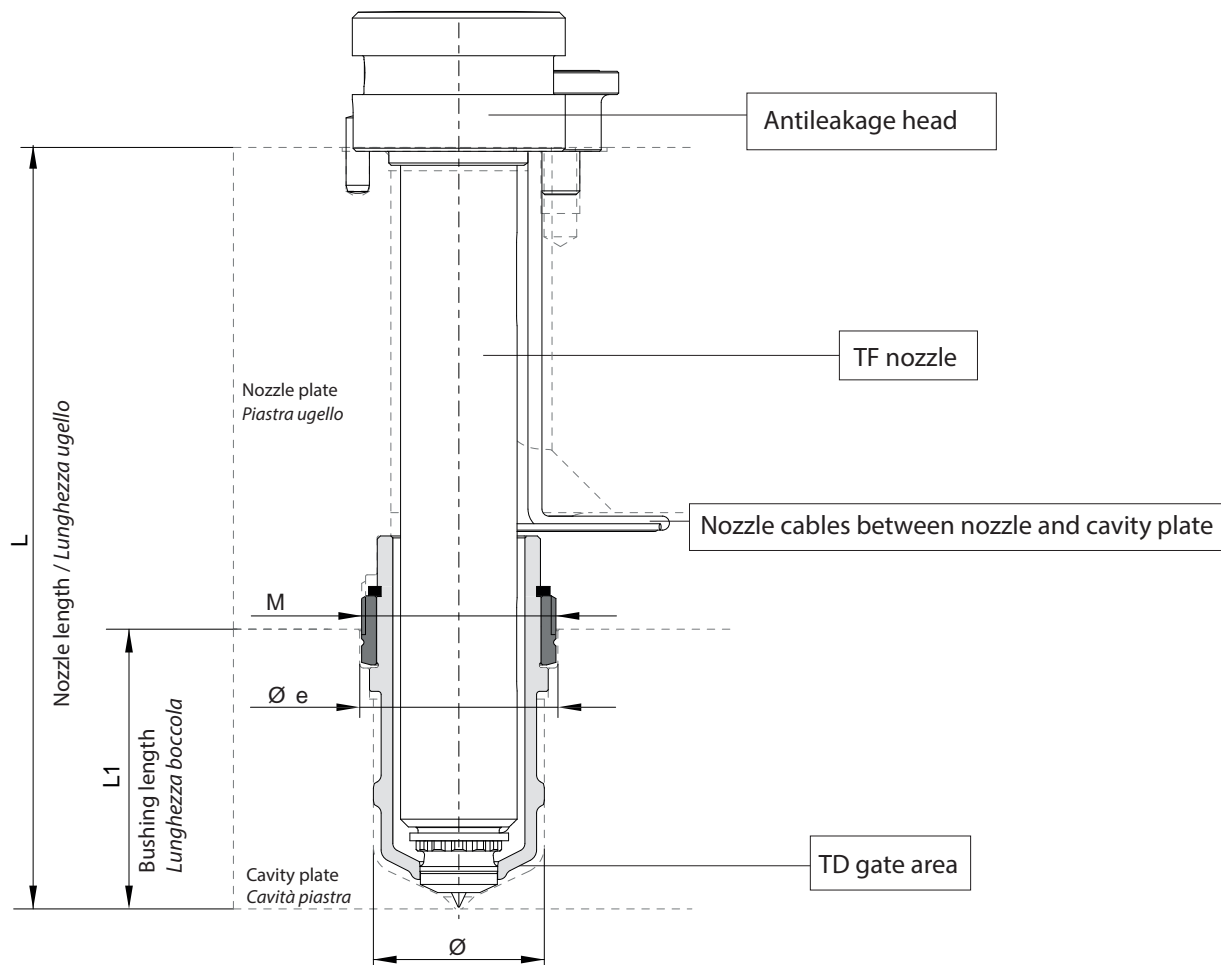
BUSHING CUTOUT / SEDE BOCCOLA



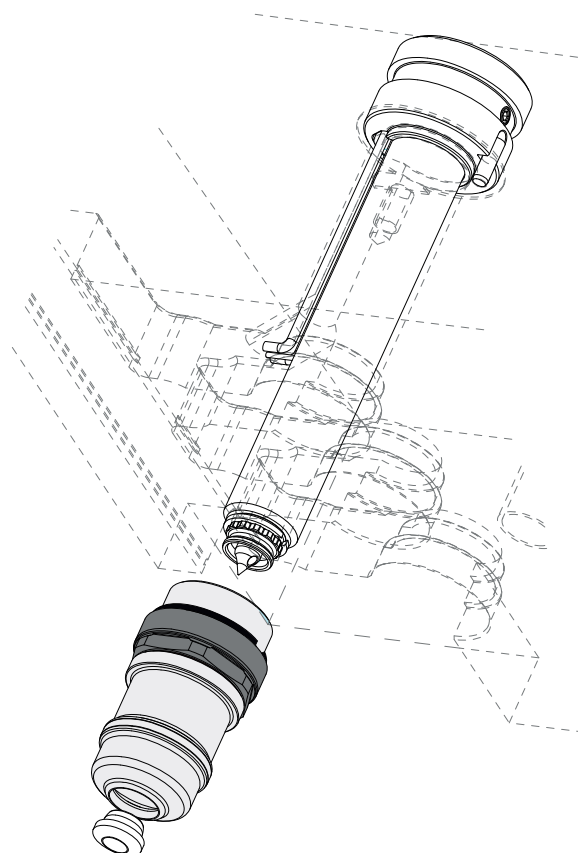
* Thermoplay reserves the right to evaluate the feasibility of the gate diameter with respect to the extra length
Thermoplay si riserva in fase d'ordine di valutare la fattibilità del diametro del foro rispetto all'altezza dell'extralonghezza

TF Ø 17	Nozzle Ø Ugello	TYPE TIPO	Ø Y *	L	TF Ø 17		TF6 Ø 17		
					sliding nozzles/ugelli a rasamento		single nozzles/monougelli		
					code/codice	code/codice extra L	code/codice	code/codice extra L	
17	1 - 1GLT	0.6 >> 1.2	36	E09568/ØY	E09570/ØY	E16908/ØY	E16910/ØY		
			46	E09569/ØY	E09571/ØY	E16909ØY	E16911/ØY		
		2 - 2P	1.0 >> 2.0	36	E09681/ØY	E09683/ØY	E16912/ØY	E1914/ØY	
				46	E09682/ØY	E09684/ØY	E16913/ØY	E16915/ØY	
		3 cylindrical 3 cilindrico	0.8 >> 1.8	36	E09690/ØY	E09692ØY	MOØ17 - pag. 11.11		
				46	E09691/ØY	E09693/ØY			
	3conical 3conico	0.8 >> 1.3	36	E09918/ØY	E09920/ØY				
			46	E09919/ØY	E09921ØY				
	1D-3D	--	36	E09700	--	E16924			--
			46	E09701	--	E16925			--
	2D	--	36	E09713	--	E16926	--		
			46	E09714	--	E16927	--		

TD Ø 18	Nozzle Ø Ugello	TYPE TIPO	Ø Y *	L	TD Ø 18		TD6 Ø 18	
					sliding nozzles/ugelli a rasamento		single nozzles/monougelli	
					code/codice	code/codice extra L	code/codice	code/codice extra L
18	1 - 1GLT	0.6 >> 1.2	36	E17032/ØY	E17034/ØY	E17032/ØY	E17034/ØY	
			46	E17033/ØY	E17035/ØY	E17033/ØY	E17035/ØY	
		2	1.0 >> 1.8	36	E17784/ØY	E17786/ØY	E17784/ØY	E17786/ØY
				46	E17785/ØY	E17787/ØY	E17785/ØY	E17787/ØY
		3 cylindrical 3 cilindrico	0.8 >> 1.1	36	E17943/ØY	E17945/ØY	--	--
				46	E17944/ØY	E17946/ØY	--	--
	3conical 3conico	0.8 >> 1.2	36	E17947/ØY	E17949/ØY	--	--	
			46	E17948/ØY	E17950/ØY	--	--	



For nozzle Per ugello	Ø	M	Ø e
TF Ø 14	18	M22	24
TF Ø 17	22	M25	25.5
TF Ø 23	30	M35	35.5



Not available on stock. Delivery times are to be agreed. *Non disponibile a magazzino. I tempi di consegna sono da concordare.*