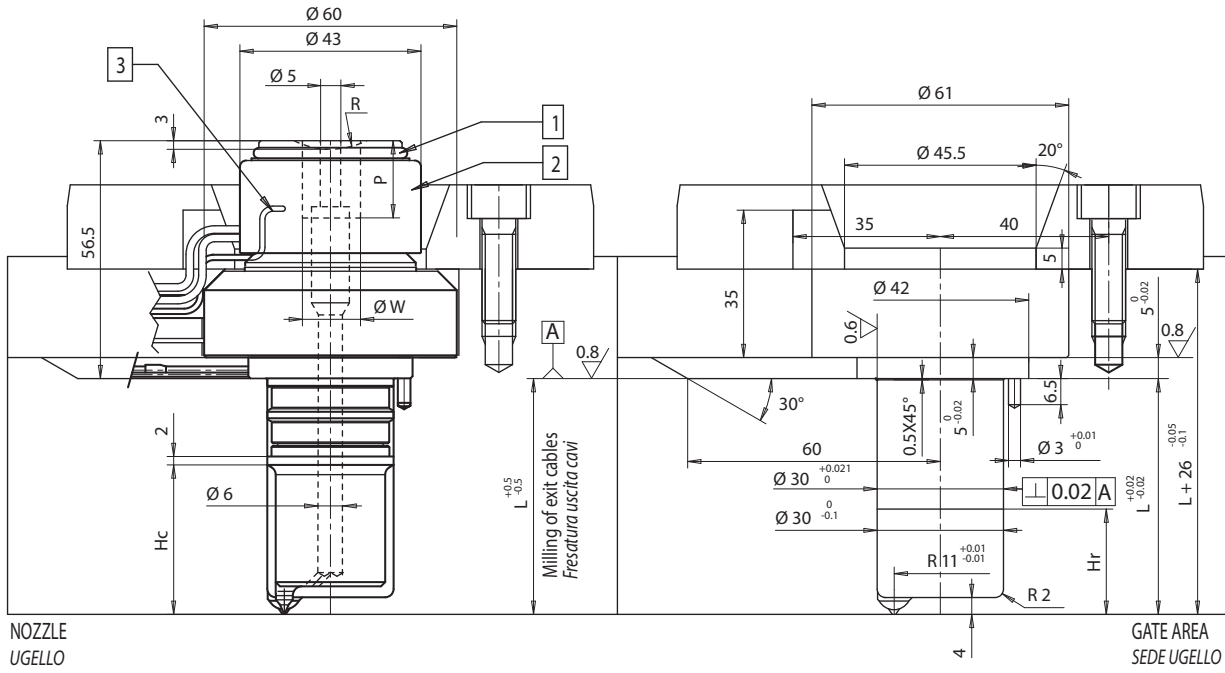


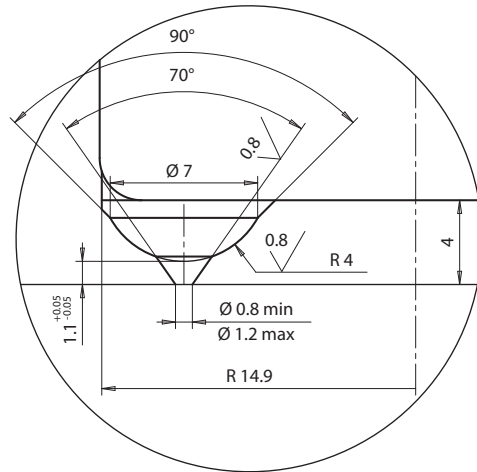
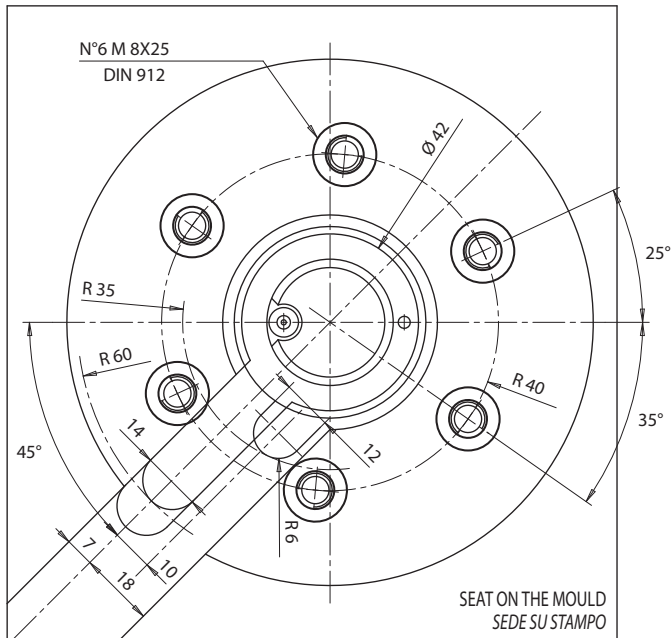


• SINGLE NOZZLE / MONOUGELLO



NOZZLE
UGELLO

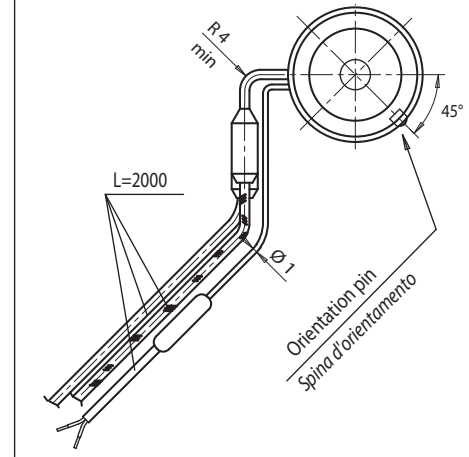
GATE AREA
SEDE UGELLO

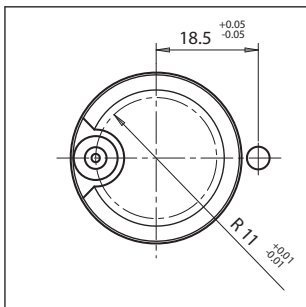


Suffix / Suffisso ②	Description / Descrizione
.. - JG	Grounded thermocouple with J type calibration Termocoppia ugello a massa tipo J
.. - JU	Insulated thermocouple with J type calibration Termocoppia ugello isolata tipo J

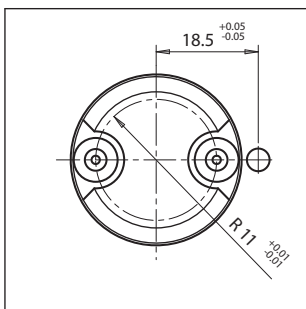
HEATER / RESISTENZA		
White / Red-White Bianco / Rosso-Bianco	230 V	
THERMOCOUPLE / TERMOCOPPIA		
Red / Rosso	TC+	
Blue / Blu	TC-	

SPARE PARTS / RICAMBI													
<p>1 SEAL RING FOR HEATER BAND ANELLO DI TENUTA PER RESISTENZA TESTA</p> <p>Code / Codice E09062</p>	<p>2 HEAD HEATER 230 V GRUPPO RESISTENZA TESTA 230 VOLT</p> <table border="1"> <tr> <td>Code / Codice</td> <td>E09040</td> <td>400 W</td> </tr> </table> <table border="1"> <tr> <td>White / Bianco Red White Rosso Bianco</td> <td>230 V</td> </tr> </table>	Code / Codice	E09040	400 W	White / Bianco Red White Rosso Bianco	230 V	<p>3 HEAD THERMOCOUPLE TERMOCOPPIA TESTA</p> <p>Grounded thermocouple with J type calibration Termocoppie a massa con calibratura tipo J</p> <table border="1"> <tr> <td>Code/Codice</td> <td>E07033</td> <td>grounded a massa</td> </tr> <tr> <td>Code/Codice</td> <td>E16035</td> <td>insulated isolata</td> </tr> </table>	Code/Codice	E07033	grounded a massa	Code/Codice	E16035	insulated isolata
Code / Codice	E09040	400 W											
White / Bianco Red White Rosso Bianco	230 V												
Code/Codice	E07033	grounded a massa											
Code/Codice	E16035	insulated isolata											

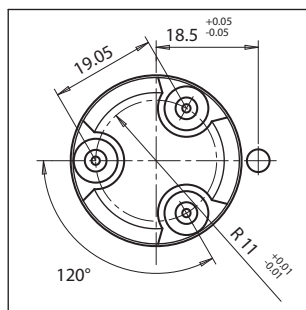




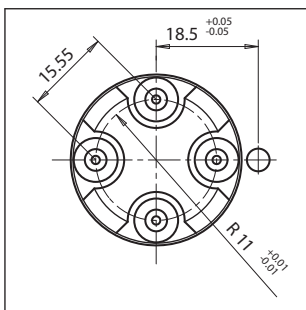
1 INJECTION POINT / 1 PUNTO D'INIEZIONE						
Nozzle code Codice ugello	L	Hc	Hr	Spacer + bushing Distanziale+boccola	L1=H+L	Power heater Watt: Potenza resistenza Watt:
E07923/S0..	36	29	25	E08179/..	36	400
E07924/S0..	46	29	25	E08184/..	46	450
E07925/S0..	56	39	35	E08184/..+E19977	56=10+46	550
E07926/S0..	76	39	35	E08184/..+E07732	76=30+46	700
E07927/S0..	96	39	35	E08184/..+E07733	96=50+46	700
E07928/S0..	126	39	35	E08184/..+E07734	126=80+46	700



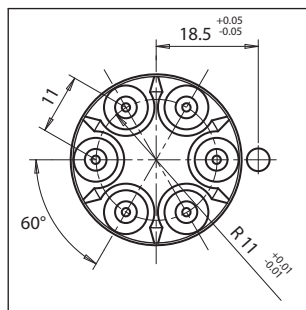
2 INJECTION POINT / 2 PUNTI D'INIEZIONE						
Nozzle code Codice ugello	L	Hc	Hr	Spacer + bushing Distanziale+boccola	L1=H+L	Power heater Watt: Potenza resistenza Watt:
E07929/S0..	36	29	25	E08180/..	36	400
E07930/S0..	46	29	25	E08185/..	46	450
E07931/S0..	56	39	35	E08185/..+E19977	56=10+46	550
E07932/S0..	76	39	35	E08185/..+E07732	76=30+46	700
E07933/S0..	96	39	35	E08185/..+E07733	96=50+46	700
E07934/S0..	126	39	35	E08185/..+E07734	126=80+46	700



3 INJECTION POINT / 3 PUNTI D'INIEZIONE						
Nozzle code Codice ugello	L	Hc	Hr	Spacer + bushing Distanziale+boccola	L1=H+L	Power heater Watt: Potenza resistenza Watt:
E07935/S0..	36	29	25	E08181/..	36	400
E07936/S0..	46	29	25	E08186/..	46	450
E07937/S0..	56	39	35	E08186/..+E19977	56=10+46	550
E07938/S0..	76	39	35	E08186/..+E07732	76=30+46	700
E07939/S0..	96	39	35	E08186/..+E07733	96=50+46	700
E07940/S0..	126	39	35	E08186/..+E07734	126=80+46	700



4 INJECTION POINT / 4 PUNTI D'INIEZIONE						
Nozzle code Codice ugello	L	Hc	Hr	Spacer + bushing Distanziale+boccola	L1=H+L	Power heater Watt: Potenza resistenza Watt:
E07941/S0..	36	29	25	E08182/..	36	400
E07942/S0..	46	29	25	E08187/..	46	450
E07943/S0..	56	39	35	E08187/..+E19977	56=10+46	550
E07944/S0..	76	39	35	E08187/..+E07732	76=30+46	700
E07945/S0..	96	39	35	E08187/..+E07733	96=50+46	700
E07946/S0..	126	39	35	E08187/..+E07734	126=80+46	700



6 INJECTION POINT / 6 PUNTI D'INIEZIONE						
Nozzle code Codice ugello	L	Hc	Hr	Spacer + bushing Distanziale+boccola	L1=H+L	Power heater Watt: Potenza resistenza Watt:
E07947/S0..	36	29	25	E08183/..	36	400
E07948/S0..	46	29	25	E08188/..	46	450
E07949/S0..	56	39	35	E08188/..+E19977	56=10+46	550
E07950/S0..	76	39	35	E08188/..+E07732	76=30+46	700
E07951/S0..	96	39	35	E08188/..+E07733	96=50+46	700
E07952/S0..	126	39	35	E08188/..+E07734	126=80+46	700

Suffix Suffisso	R	WxP
../S001	0	
../S002	1/2"	
../S003	19.5	
../S004	40	
../S005		Ø14x21
../S006		Ø16x21

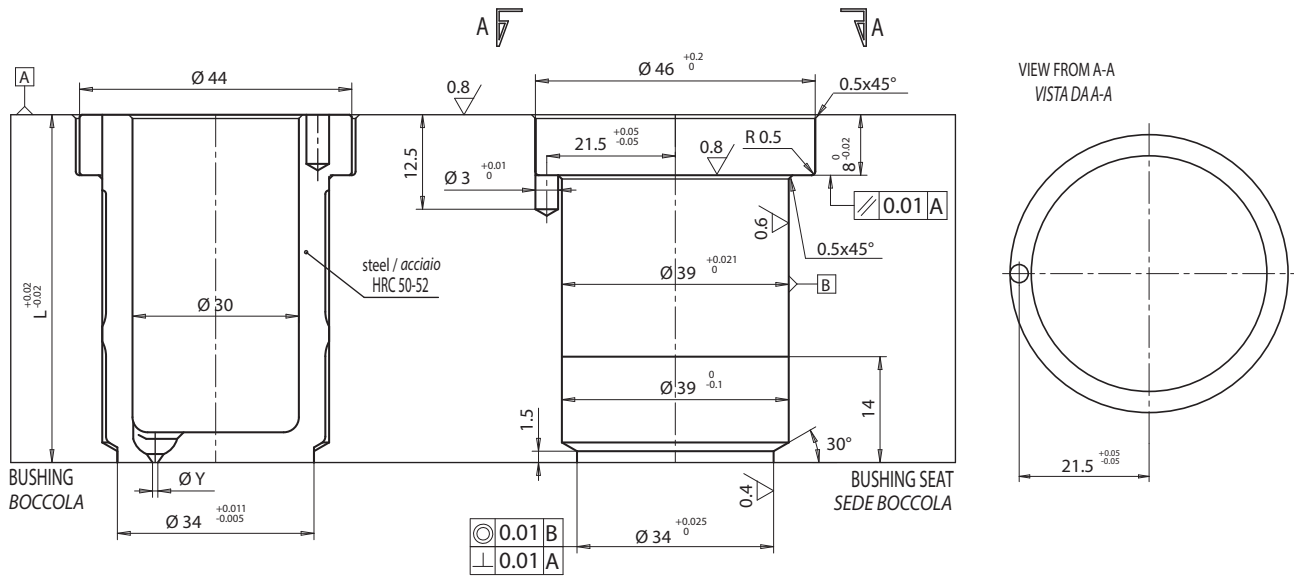
Example of order / Esempio d'ordine:
E07952/S002 - JG
 Nozzle code / Codice ugello
 Head heater / Raggio testa
 Thermocouple type (grounded)
 Tipo termocoppia (a massa)

1-4 INJECTION POINT 1-4 PUNTI D'INIEZIONE	6 INJECTION POINT 6 PUNTI D'INIEZIONE	Minimum radius is possible between injection tips through special execution. Raggio minimo fattibile tra le punte d'iniezione in esecuzione speciale.



• BUSHING / BOCCOLA

To consult the previous page for the codes of bushing
 Consultare la pagina precedente per i codici delle boccole



Bushing for nozzle Boccola porta ugello	
Y injection hole Ø Y foro iniezione	
Ø	Suffix Suffisso
0.8	08
0.9	09
1.0	10
1.1	11
1.2	12

Example of order / Esempio d'ordine:
E08180 / 11
 Bushing code / Codice boccola
 Injection hole / Foro d'iniezione

• BUSHING + SPACER / BOCCOLA + DISTANZIALE

Spacer code Codice distanziale	H
E07731	20
E07732	30
E07733	50
E07734	80

