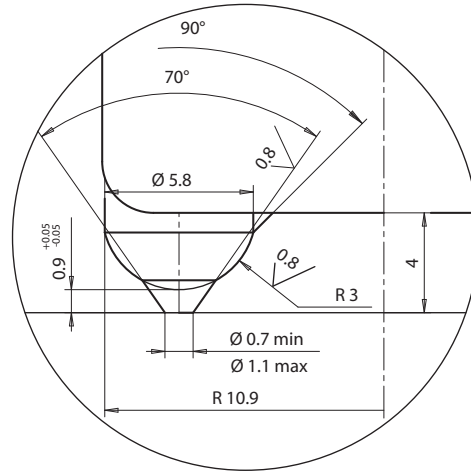
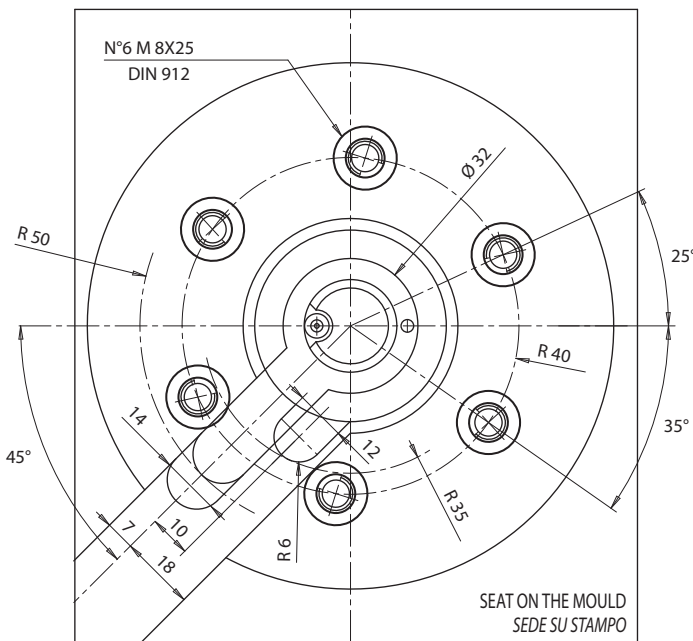
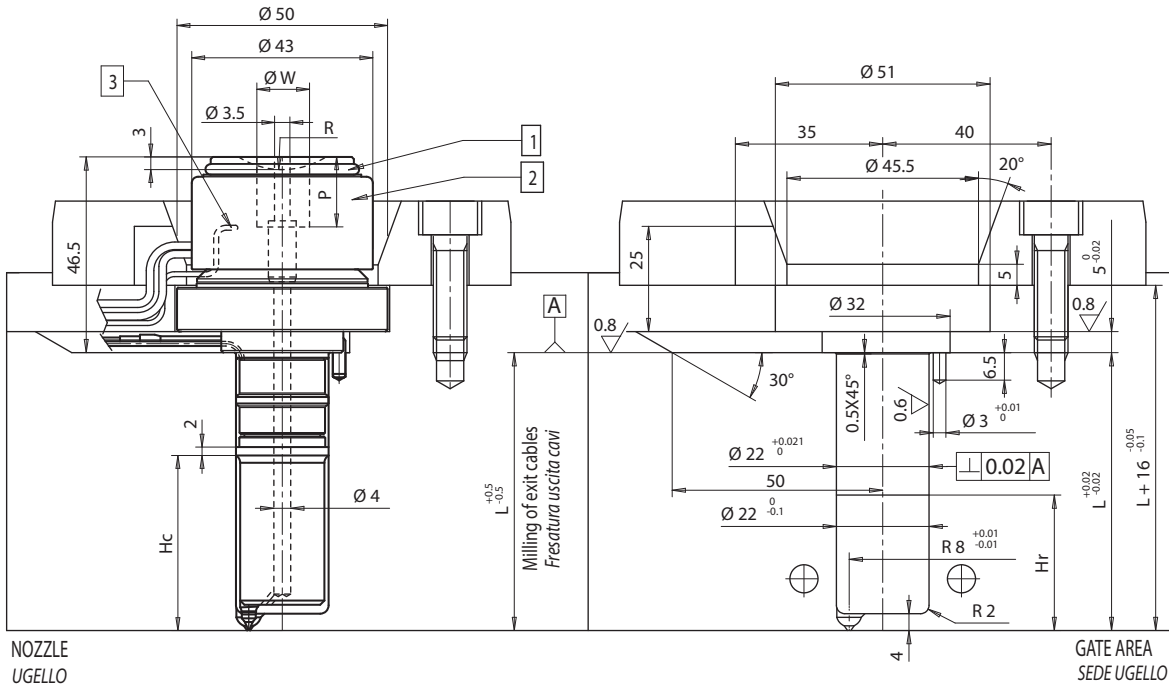




• SINGLE NOZZLE / MONOUGELLO



Suffix Suffisso ②	Description / Descrizione
.. - JG	Grounded thermocouple with J type calibration Termocoppia ugello a massa tipo J
.. - JU	Insulated thermocouple with J type calibration Termocoppia ugello isolata tipo J

HEATER / RESISTENZA	
White / Red-White Bianco / Rosso-Bianco	230 V
THERMOCOUPLE / TERMOCOPPIA	
Red / Rosso	TC+
Blue / Blu	TC-

SPARE PARTS / RICAMBI

1 SEAL RING FOR HEATER BAND  
ANELLO DI TENUTA PER RESISTENZA TESTA

Code / Codice	E09062
---------------	--------

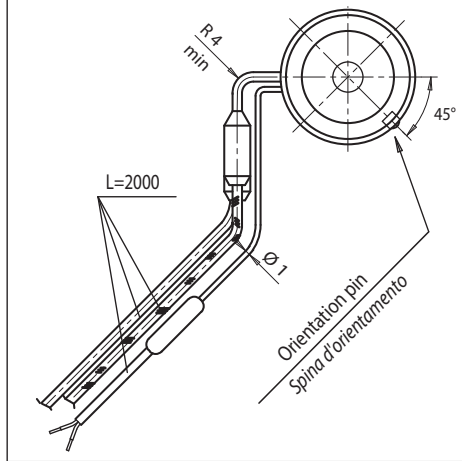
2 HEAD HEATER 230 V  
GRUPPO RESISTENZA TESTA 230 VOLT

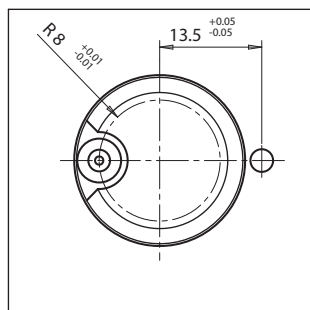
Code / Codice	E09040	400 W
White / Bianco	Red White	230 V
Red White	Rosso Bianco	

3 HEAD THERMOCOUPLE  
TERMOCOPPIA TESTA

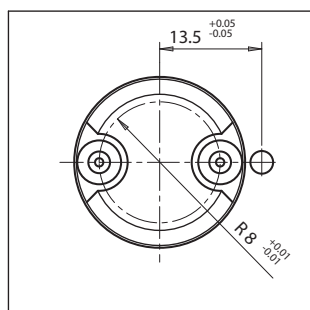
Grounded thermocouple with J type calibration  
Termocoppie a massa con calibratura tipo J

Code/Codice	E07033	grounded a massa
Code/Codice	E16035	insulated isolata

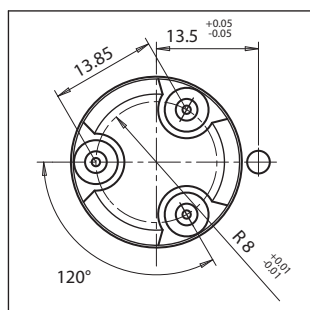




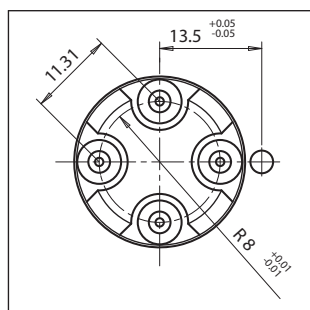
1 INJECTION POINT / 1 PUNTO D'INIEZIONE						
Nozzle code Codice ugello	L	Hc	Hr	Spacer + bushing Distanziale+boccola	L1=H+L	Power heater Watt: Potenza resistenza Watt:
<b>E07903/S0..</b>	36	29	25	E07245/..	36	240
<b>E07904/S0..</b>	46	29	25	E07526/..	46	330
<b>E07905/S0..</b>	56	39	35	E07526/..+E19976	56=10+46	400
<b>E07906/S0..</b>	66	39	35	E07526/..+E07729	66=20+46	450
<b>E07907/S0..</b>	86	39	35	E07526/..+E07730	86=40+46	500



2 INJECTION POINT / 2 PUNTI D'INIEZIONE						
Nozzle code Codice ugello	L	Hc	Hr	Spacer + bushing Distanziale+boccola	L1=H+L	Power heater Watt: Potenza resistenza Watt:
<b>E07908/S0..</b>	36	29	25	E07246/..	36	240
<b>E07909/S0..</b>	46	29	25	E07527/..	46	330
<b>E07910/S0..</b>	56	39	35	E07527/..+E19976	56=10+46	400
<b>E07911/S0..</b>	66	39	35	E07527/..+E07729	66=20+46	450
<b>E07912/S0..</b>	86	39	35	E07527/..+E07730	86=40+46	500



3 INJECTION POINT / 3 PUNTI D'INIEZIONE						
Nozzle code Codice ugello	L	Hc	Hr	Spacer + bushing Distanziale+boccola	L1=H+L	Power heater Watt: Potenza resistenza Watt:
<b>E07913/S0..</b>	36	29	25	E07247/..	36	240
<b>E07914/S0..</b>	46	29	25	E07528/..	46	330
<b>E07915/S0..</b>	56	39	35	E07528/..+E19976	56=10+46	400
<b>E07916/S0..</b>	66	39	35	E07528/..+E07729	66=20+46	450
<b>E07917/S0..</b>	86	39	35	E07528/..+E07730	86=40+46	500



4 INJECTION POINT / 4 PUNTI D'INIEZIONE						
Nozzle code Codice ugello	L	Hc	Hr	Spacer + bushing Distanziale+boccola	L1=H+L	Power heater Watt: Potenza resistenza Watt:
<b>E07918/S0..</b>	36	29	25	E07248/..	36	240
<b>E07919/S0..</b>	46	29	25	E07529/..	46	330
<b>E07920/S0..</b>	56	39	35	E07529/..+E19976	56=10+46	400
<b>E07921/S0..</b>	66	39	35	E07529/..+E07729	66=20+46	450
<b>E07922/S0..</b>	86	39	35	E07529/..+E07730	86=40+46	500

Suffix Suffisso	R	WxP
<b>../S001</b>	0	
<b>../S002</b>	1/2"	
<b>../S003</b>	19.5	
<b>../S004</b>	40	
<b>../S005</b>		Ø14x21
<b>../S006</b>		Ø16x21

Example of order / Esempio d'ordine:

**E07922/S002 - JG**

Nozzle code / Codice ugello

Head heater / Raggio testa

Thermocouple type (grounded)

Tipo termocoppia (a massa)

Minimum radius is possible between injection tips through special execution.

Raggio minimo fattibile tra le punte d'iniezione in esecuzione speciale.

